

3 Piccadilly Place
 Manchester
 M1 3BN

P03	Second Issue: Revised Order Limits				
	PKEL	CESL	JSIM	AWAR	KWHA
	19/04/23	19/04/23	19/04/23	16/05/23	16/05/23
Revision	Created	Checked	Reviewed	Approved	Authorised

Scale @ A3: 1:125,000 | Project Ref No HE565627 | Stage: Stage 3

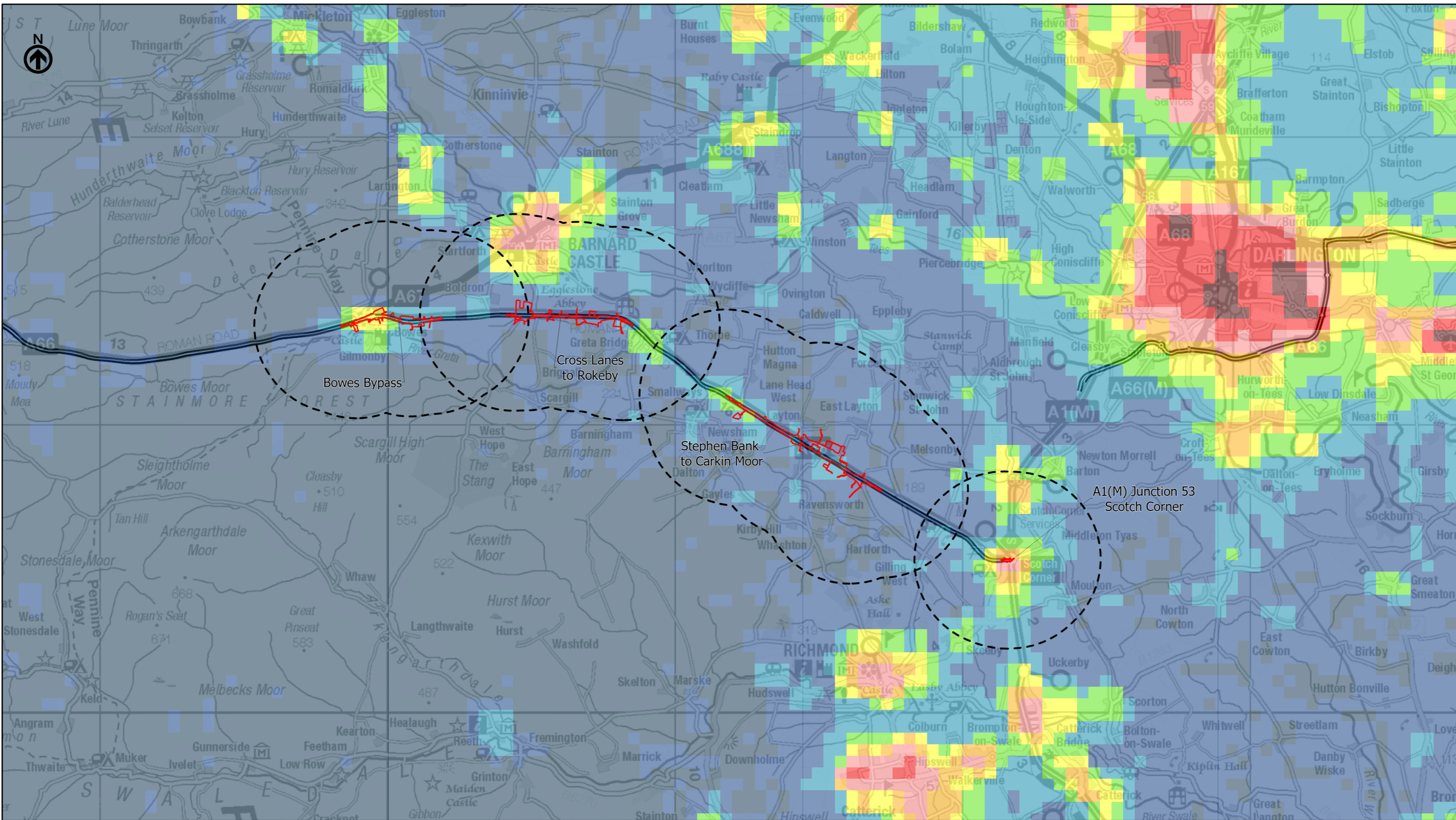
© Crown copyright and database rights (2023). All rights reserved. OS 100030649. Contains public sector information licensed under the Open Government Licence v3.0 CPRE, the countryside charity Night Lights Data: Earth Observation Group, NOAA National Geophysical Data Center. Data processed by LUC on behalf of CPRE.

Project Name
A66 Northern Trans-Pennine Project

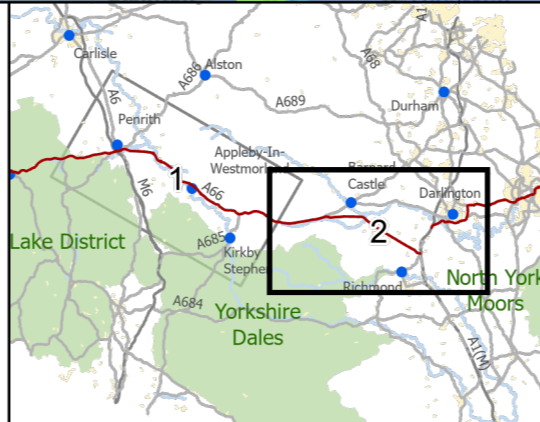
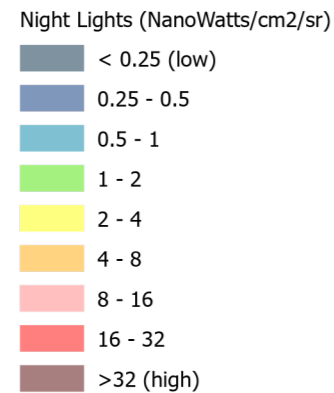
Map Title
Figure 10.6 CPRE Dark Skies Sheet 1 of 2

Map Number	Project	Originator	Volume
HE565627	S00	AMY	ELS
Location	Type	Role	Number
MP - LL	-	-	006088

Suitability	Suitability Description	Revision
S4	FIT FOR STAGE APPROVAL	P03

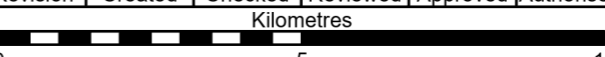


- Existing A66
- Order Limits
- Study Area 3km



3 Piccadilly Place
Manchester
M1 3BN

P02	First Issue				
	PKEL	CESL	JSIM	AMIT	KWHA
	18/03/22	18/03/22	18/03/22	20/04/22	20/04/22
Revision	Created	Checked	Reviewed	Approved	Authorised



Scale @ A3: 1:125,000 | Project Ref No HE565627 | Stage: Stage 3
 © Crown copyright and database rights (2022). All rights reserved. OS 100030649.
 Contains public sector information licensed under the Open Government Licence v3.0
 CPRE, the countryside charity Night Lights Data: Earth Observation Group, NOAA
 National Geophysical Data Center. Data processed by LUC on behalf of CPRE.

Project Name
A66 Northern Trans-Pennine Project

Map Title
**Figure 10.6
CPRE Dark Skies
Sheet 2 of 2**

Map Number	Project	Originator	Volume
HE565627	-	AMY	-
S00	-	MP - LL	-
Location	Type	Role	Number

Suitability	Suitability Description	Revision
S4	FIT FOR STAGE APPROVAL	P02